

# Polaris Technologies Ltd.

Your AllFusion Harvest Change Manager Experts

Suite 2600 144 4<sup>th</sup> Ave SW  
Calgary, AB., Canada  
T2P3N4

## FORTE CHANGE MANAGEMENT <sup>®</sup> WITH ALLFUSION HARVEST

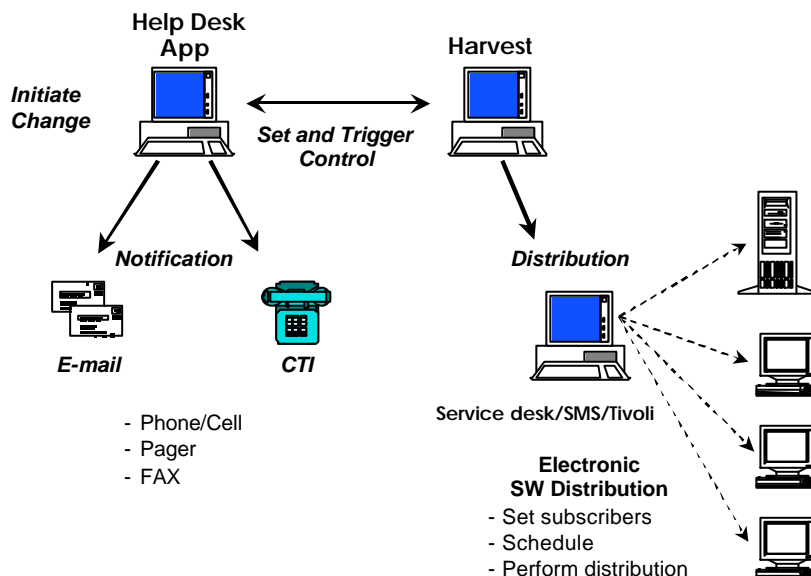
Craig Farkas  
[cfarkas@polaristech.com](mailto:cfarkas@polaristech.com)  
P: 403-264-5544 / F: 403-241-6398  
[www.polaristech.com](http://www.polaristech.com)

### Overview

During the last several years, the Forte development environment has become an integral part of many large IT departments, with vast amounts of money being spent on application development. To protect this investment, it is vital that IT departments develop processes that protect Forte components from changes that are potentially disruptive or have unacceptable risk associated with them. Part of this risk is created due to the fact Forte V3.x has no version control built into it.

The **Forte AllFusion Harvest Integration Kit** provides the process and tool to protect the integrity, stability, security, and availability of the Forte development environment. The change control engine is provided by CA's AllFusion Harvest, which is used to initiate, document, notify, track, approve, and promote a change request through it's lifecycle, as well as providing basic version control of Forte objects.

Below is a high level diagram illustrating the integration of help desk, change control, and electronic software distribution components:



### The Forte 3.0 Development Environment

The Forte 3.0 Development Environment consists of multiple repositories. Each repository contains multiple projects, libraries, etc. Each project consists of classes, service objects, etc. An application is typically comprised of projects and libraries located in one repository. The repository contains a master area with the latest version of all the code that has been checked in and multiple user workspace areas. The user workspace consists of code from the master area and additional code that is being developed by the workspace owner.

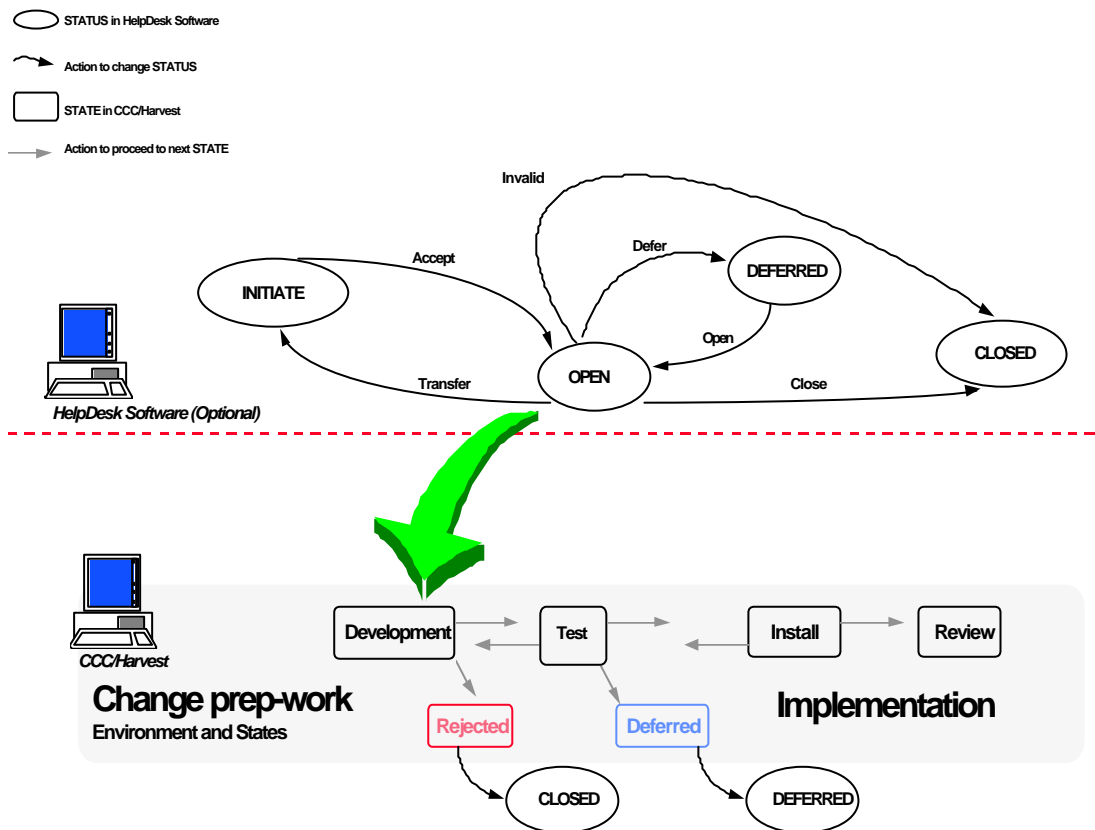
When a developer wishes to work on the application, he checks out from the master area or creates new components. This action places a lock on the components. When the developer has finished with the components, he checks them into the master area. This removes the lock. Only the most recent copy of code is maintained in the master area and user workspace areas. Forte V3.x does not provide Source Code Management (SCM). Forte V3.x provides a very limited SCM interface.

## Contents

The Forte AllFusion Harvest Integration Kit contains the following components:

### Forte Change Management (CM) Methodology

Our Forte CM module comes with an extremely detailed design document that provides a complete step-by-step methodology for managing changes within a Forte application. This process has multiple phases; the speed at which a change moves through the process depends on the complexity, risk, and urgency of the change. Each phase has several tasks (i.e. Preparing Impact Assessment, Developing Implementation Schedule, etc.) associated with it. Below is a high level diagram illustrating our CM process flow.



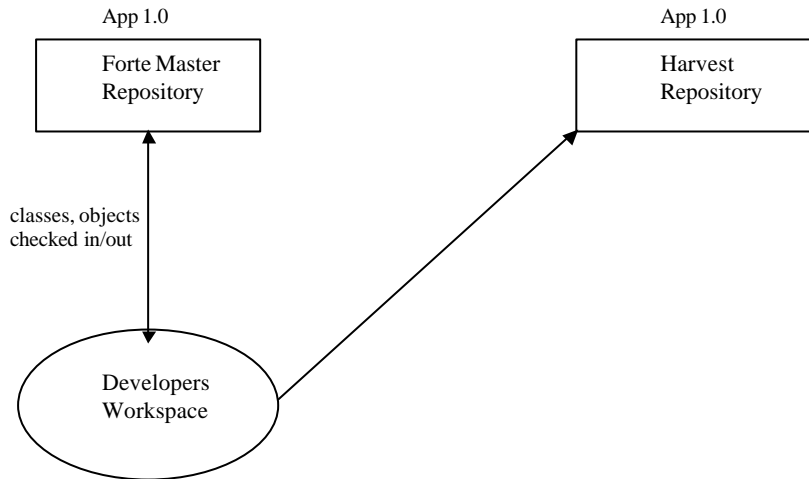
### The Harvest-Forte Interface (or HFI)

This is the main interface that will allow versioning at the project and class level.

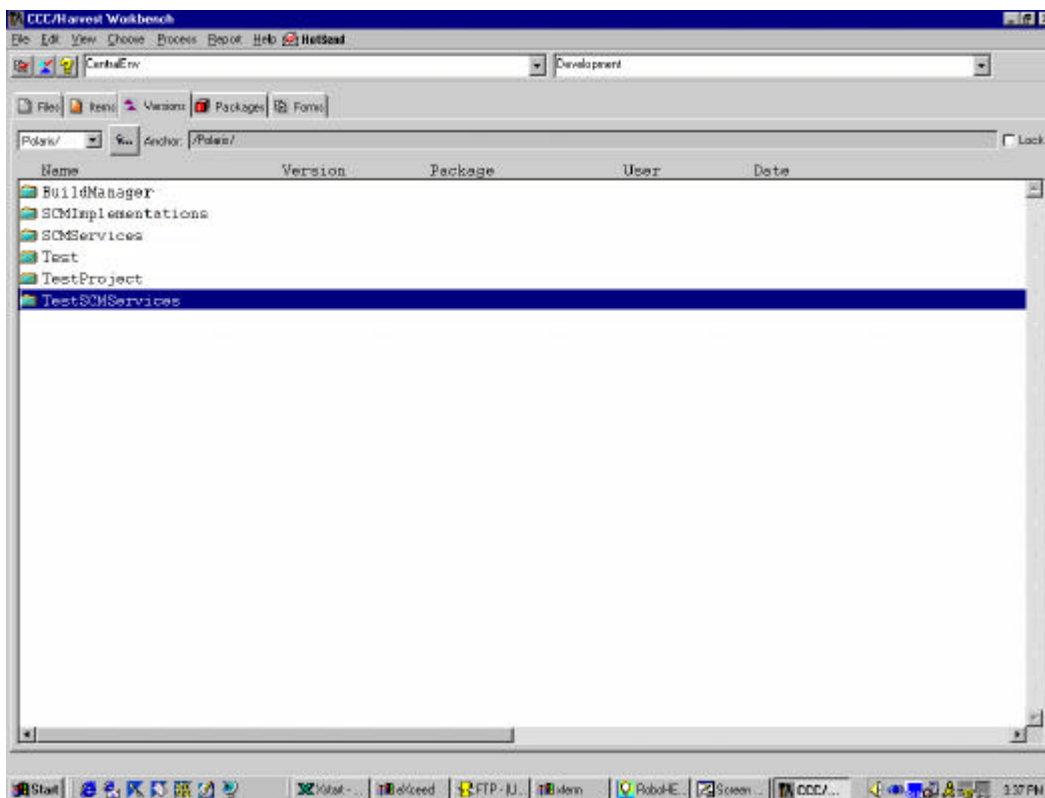
The following is a list of the basic version control capabilities that the HFI can provide:

- save historical versions of source code
- track who created, changed, and commented source code
- retrieve saved historical source code
- perform comparisons between versions of source code

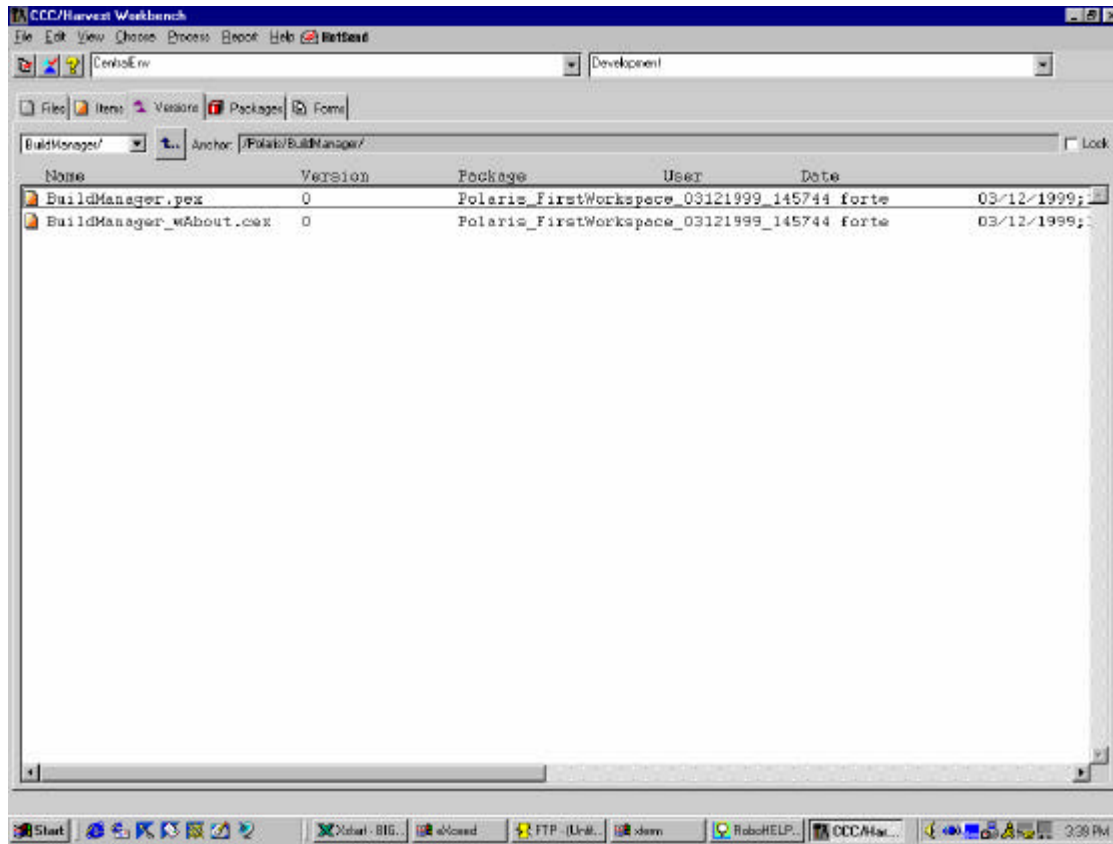
Basically, when a workspace integration is performed, the project and class files (.pex and .cex) are checked into the Harvest environment and it's corresponding repository. Harvest is used as a repository for all Forte projects and their associated classes. With the added benefit of the Electronic Change Control Engine that is provided by Harvest, a reasonable level of Change/Version control can be attained with the Forte product.



For each project within an environment, a folder will be created within the Harvest repository. In the following example the Harvest environment is **CentralEnv**, and the Harvest repository is **Polaris**. These match up one to one with the Forte environment and repository.



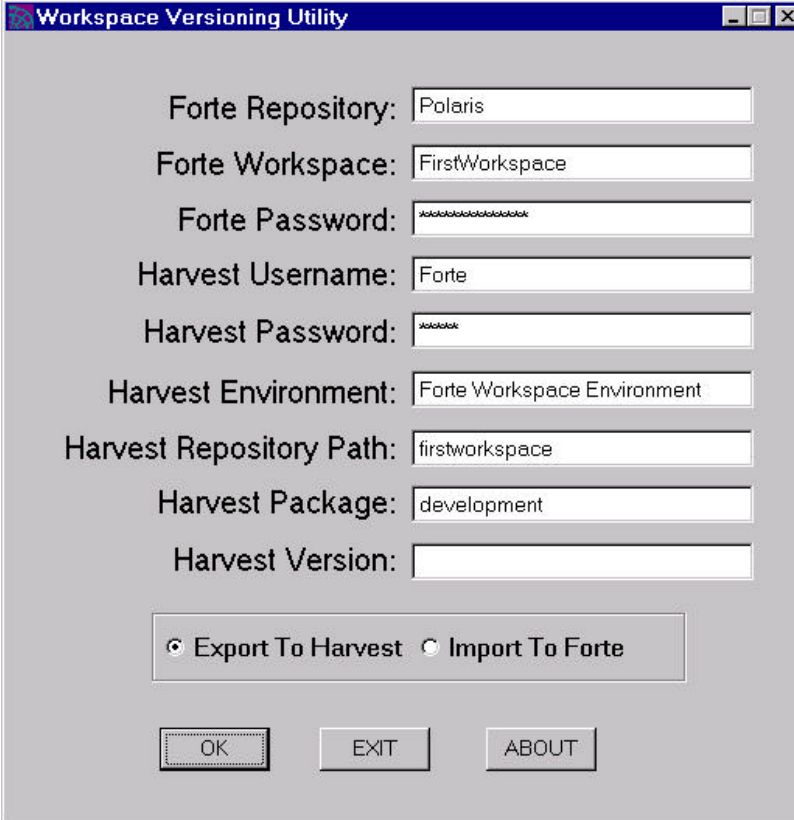
In each project folder we have the project and all its associated classes. These are contained in .pex and .cex files. The Harvest package name contains the repository name date-time. The Harvest package is automatically created just before the files are checked into Harvest.



The added functionality that AllFusion Harvest provides in terms of problem tracking and release management is also very beneficial.

## **The Workspace Versioning Utility**

This utility allows developers to store and version their workspace into Harvest. No versioning is done at the object level in this utility, and the entire workspace is captured.



The screenshot shows a window titled "Workspace Versioning Utility" with a blue title bar. The window contains several input fields and a group box with radio buttons. The fields are: Forte Repository: Polaris; Forte Workspace: FirstWorkspace; Forte Password: masked with asterisks; Harvest Username: Forte; Harvest Password: masked with asterisks; Harvest Environment: Forte Workspace Environment; Harvest Repository Path: firstworkspace; Harvest Package: development; Harvest Version: empty. The group box contains two radio buttons: "Export To Harvest" (selected) and "Import To Forte". At the bottom are three buttons: "OK", "EXIT", and "ABOUT".

## **Requirements**

- AllFusion Harvest V4.x or greater
- Forte V3.x on a Unix server

---

## **Pricing & Availability**

For pricing and availability, please contact Craig Farkas at Polaris Technologies Ltd., 403-264-5544, or email at [cfarkas@polaristech.com](mailto:cfarkas@polaristech.com).

---

## **About Polaris Technologies Ltd.**

Polaris Technologies is innovative software and consulting company that is committed to the successful implementation of SCM processes and tools in the corporate community. Working co-operatively with Computer Associates (CA), Polaris is providing SCM solutions to a wide range of applications across multiple disciplines and industries. Polaris is also a CA Consulting Partner and we offer a full line of AllFusion Harvest training, implementation, and consulting services.