

Polaris Technologies Ltd.

Your AllFusion Harvest Change Manager Experts

Suite 2600 144 4th Ave SW
Calgary, AB,, Canada
T2P3N4

PEOPLESOFT CHANGE MANAGEMENT WITH ALLFUSION HARVEST

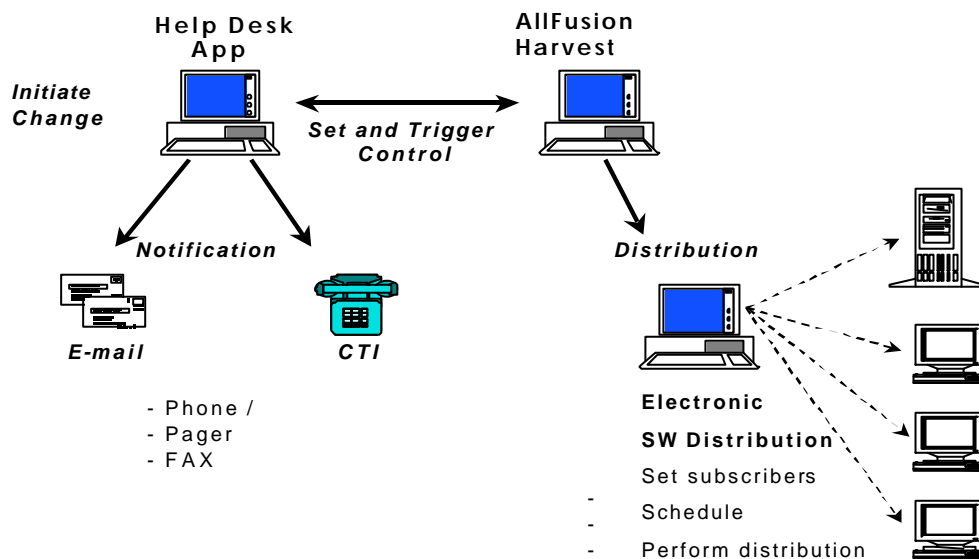
Craig Farkas
cfarkas@polaristech.com
P: 403-264-5544 / F: 403-241-6398
www.polaristech.com

Overview

During the last few years, PeopleSoft has become an integral part of many large corporations, with vast amounts of money being spent on the software and the consulting time to implement it. To protect this investment, it is vital that Information Technology departments develop processes that protect PeopleSoft components from changes that are potentially disruptive or have unacceptable risk associated with them.

PeopleSoft environments also face the challenge of managing the migration to many database and file system environments and high volume / fast-paced change requests.

The **PeopleSoft / Harvest Change Management Solution Kit** provides the process and the tool to protect the integrity, stability, security, and availability of the PeopleSoft business systems environment. The change control 'engine' is provided by CA's AllFusion Harvest, which is used to initiate, document, notify, track, approve, and promote a change request through its lifecycle. Below is a high level diagram illustrating the integration of Helpdesk, Change Control, and Electronic Software Distribution components.



Benefits

- Allows PeopleSoft changes to be initiated, documented, notified, tracked, approved, and promoted through their lifecycle.
- Protects PeopleSoft components from changes that are potentially disruptive or have unacceptable risk associated with them.
- Provides proper change management ensuring a high quality implementation. Most PeopleSoft projects have many more change requests than initially anticipated.
- Provides the ability to review change requests and summarize them for future changes and to assist in determining actual benefits realized.

Contents

The PeopleSoft / Harvest Change Management Solution Kit contains the following components:

PeopleSoft / Harvest Change Management Methodology

The PeopleSoft / Harvest Change Management Solution Kit includes a detailed 30-page design document that provides a complete step-by-step methodology for management of PeopleSoft changes. This process has multiple phases; the speed at which a change moves through the process depends on the complexity, risk, and urgency of the change:

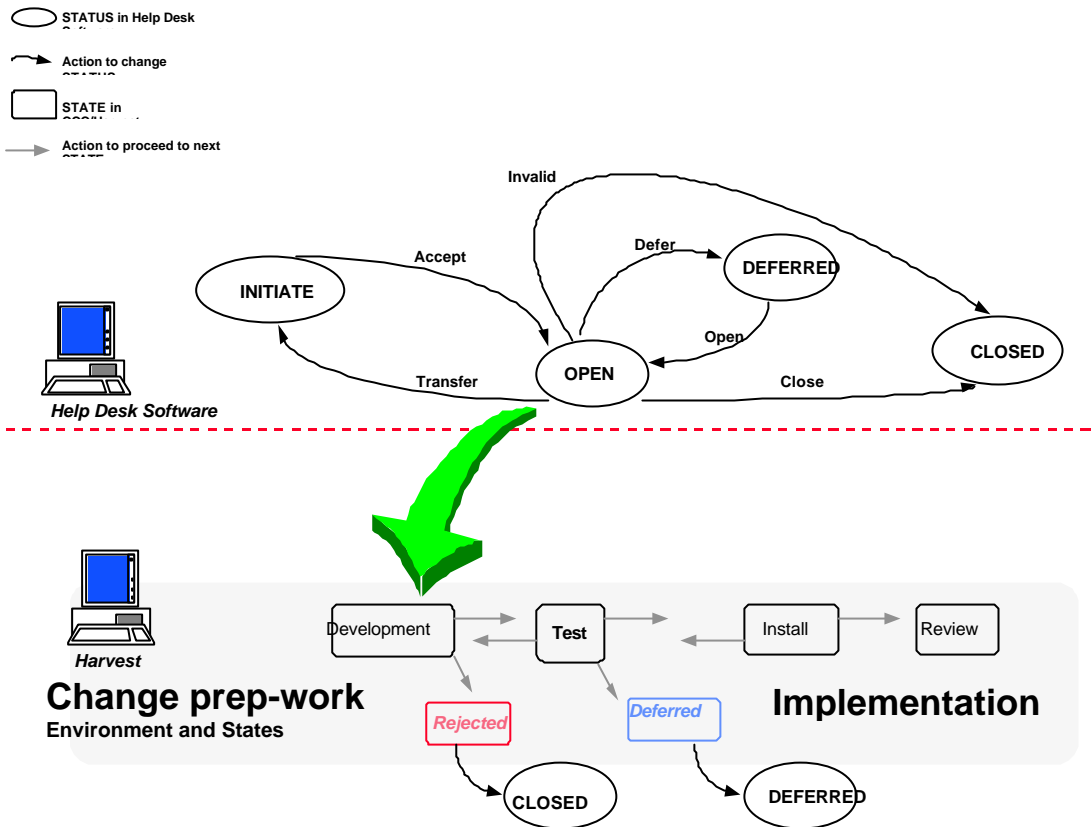
- Initiate / Evaluate change request
- Make change in development
- Test change in QA
- Plan Production Implementation
- Implementation of release into production
- Perform post implementation review

Each phase has several tasks (i.e. preparing an impact assessment, developing implementation schedule, etc.) associated with it. Below is a high level diagram illustrating our SCM process flow.

The design document also includes detailed descriptions and functionality of:

- PeopleSoft change types
(change to PeopleSoft table structures, PeopleSoft security, etc.)
- PeopleSoft change management role definitions
(change initiator, PeopleSoft business analyst, etc.)
- PeopleSoft responsibility definitions

It also includes the methodology in a quick reference on-line hypertext document, as well as a diagram outlining the process flow.



PeopleSoft / Harvest SCM Model

The change control engine of AllFusion Harvest is our choice for assisting in implementing the management of PeopleSoft changes. When a change is needed for PeopleSoft, it is created and tracked in the Harvest / PeopleSoft environment. Based on our process flow described previously, a PeopleSoft environment has been constructed in Harvest to manage the lifecycle of a change.

The PeopleSoft SCM environment provides the following Harvest elements fully developed for immediate use:

- States;
- Processes;
- User Groups;
- Approvals;
- Notifications; and,
- Galaxy Forms (change activity, back out plan, impact assessment, etc.).

Capture Database Updates (DML)

From Harvest via CA's Unicenter Log Analyzer, you can capture database updates (DML's) corresponding to PeopleSoft metadata / objects changes and automatically check it in to the current package.

The following SQL can be generated and saved:

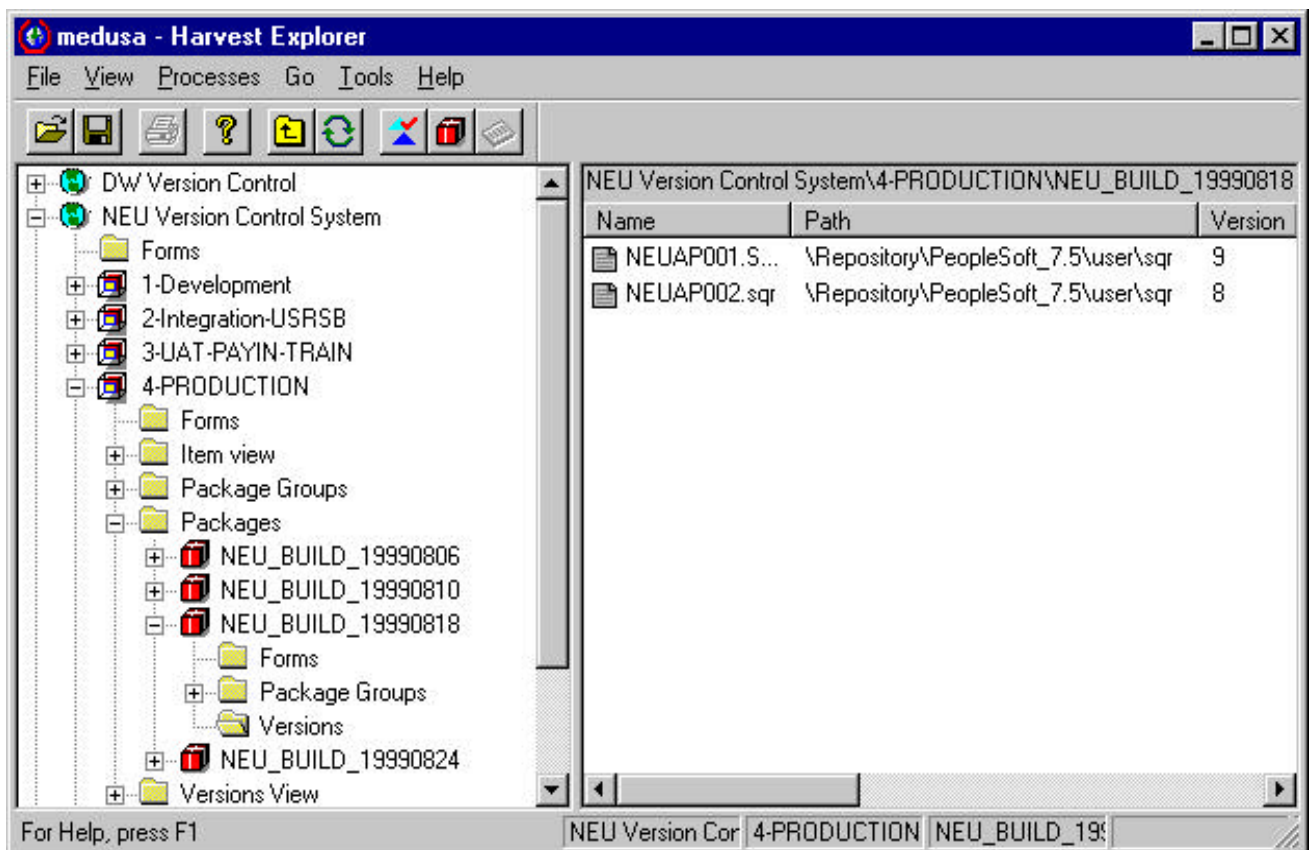
- Redo scripts (actual DML statements) apply changes to another environment
- Rollback scripts (reverses any DML that took place)
- Audit log (detailed report on DML that occurred)

Some of the benefits received are:

- Document metadata / object changes associated with a particular change
- Provide controlled rollback
- Provide audit capabilities of metadata / object changes
- Increased knowledge of PeopleSoft metadata

PeopleSoft / Harvest Versioning of Non Repository Objects

Harvest can be directly used to manage your PeopleSoft non-repository objects such as COBOL source code, SQR, shell scripts, custom COBOL programs, custom SQR, and other related files (see diagram below). PeopleSoft does not have an API, consequently, Harvest is unable to access the repository objects directly.



Pricing & Availability

For pricing and availability, please contact Craig Farkas at Polaris Technologies Ltd., 403-264-5544 or email at cfarkas@polaristech.com.

About Polaris Technologies Ltd.

Polaris Technologies is innovative software and consulting company that is committed to the successful implementation of SCM processes and tools in the corporate community. Working co-operatively with Computer Associates (CA), Polaris is providing SCM solutions to a wide range of applications across multiple disciplines and industries. Polaris is also a CA Consulting Partner and we offer a full line of AllFusion Harvest training, implementation, and consulting services.